

Customer :

customer

Customer part :

customer part

Comment :

Comment

S1=2.85

S2=2.95

Tmax=458

Tp S2=497.0

PI=0.49

HI=76

Sample =1724.30

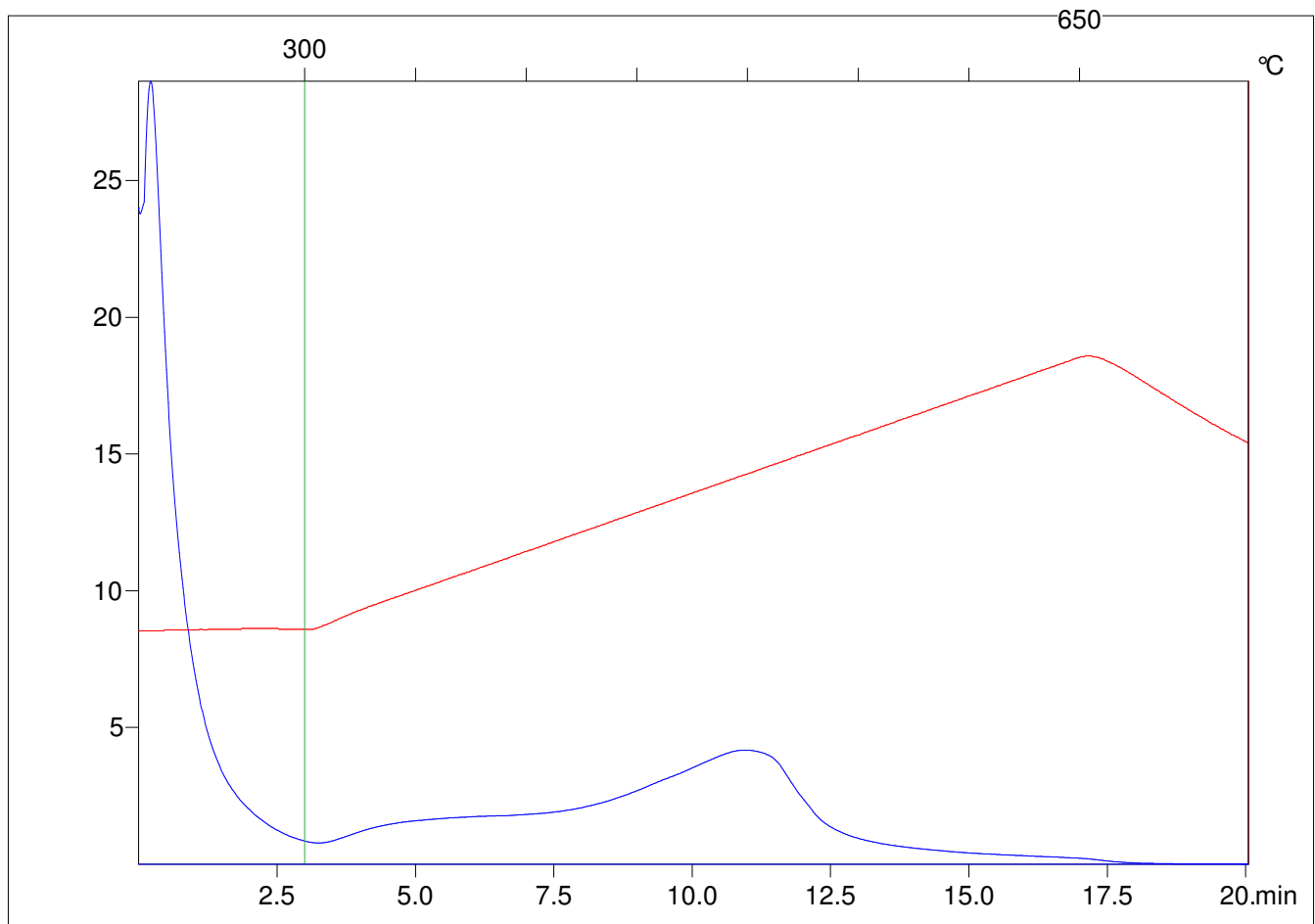
Method =Bulk Rock

Cycle=Basic

KFID(10\*9)=1444

Qty =70.6

TOC=3.87



C:\VINC\PK2\_1792\PK036.R00 : FID pyrolysis graphic

State

Pyro Status

Oxi Status